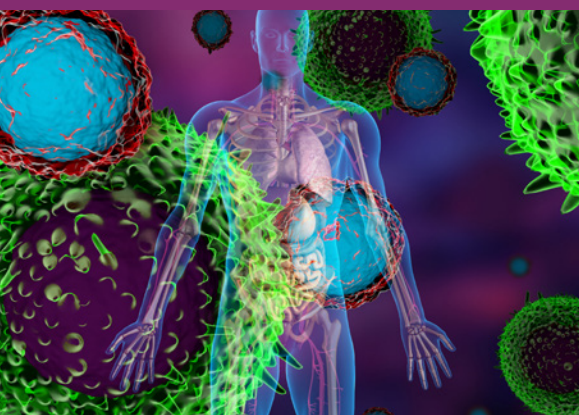


Emergency Medicine and Immuno-Oncology Intersect: Recognizing and Managing Cancer Immunotherapy–Related Adverse Effects in the Emergency Department

Course Director: Daniel Pallin, MD, MPH



Date: Monday, December 9, 2019

Time: 12:00 PM - 1:00 PM

Faculty: Daniel Pallin, MD, MPH

| DATE | LOCATION | FACULTY |
|--|---|--|
| Monday, December 9, 2019 12:00 PM - 1:00 PM | Illinois College of Emergency Physicians 3000 Woodcreek Drive, Suite 200 Downers Grove, IL 60516 Conference Center | Daniel Pallin, MD, MPH Cambridge, Massachusetts |

TARGET AUDIENCE

This activity has been designed to meet the educational needs of emergency medicine physicians, nurses, and other professionals involved in managing patients experiencing oncologic emergencies presenting to emergency departments.

EDUCATIONAL OBJECTIVES

Upon completion of this activity, participants will be able to:

- Summarize the basic principles of harnessing the human immune system in the treatment of cancer, as well as the mechanistic aspects of immune checkpoint inhibition in cancer therapy and development of immune-related adverse effects (irAEs) associated with immunotherapies
- Describe the spectrum of the more and less common irAEs associated with the immune checkpoint inhibitors and combinations, including incidence and presentation, with emphasis on those most likely to be encountered by emergency medicine (EM) professionals in the emergency department (ED)
- Discuss the general and organ/site-specific recommendations for recognition, evaluation, diagnosis/differential diagnosis, and management of irAEs in the ED
- Implement recommended strategies for triage, evaluation, diagnosis, and management of relevant irAEs in EM settings in collaboration with oncology

PROVIDERSHIP, CREDIT & SUPPORT

Physicians

This activity has been planned and implemented in accordance with the accreditation requirements and policies of the Accreditation Council for Continuing Medical Education (ACCME) through the joint providership of Medical Learning Institute, Inc. and PVI, PeerView Institute for Medical Education. The Medical Learning Institute, Inc. is accredited by the ACCME to provide continuing medical education for physicians.

The Medical Learning Institute, Inc. designates this live activity for a maximum of 1.0 AMA PRA Category 1 Credit™. Physicians should claim only the credit commensurate with the extent of their participation in the activity.

MOC Statement

Successful completion of this CME activity, which includes participation in the evaluation component, enables the participant to earn up to 1.0 MOC points in the American Board of Internal Medicine's (ABIM) Maintenance of Certification (MOC) program. Participants will earn MOC points equivalent to the amount of CME credits claimed for the activity. It is the CME activity provider's responsibility to submit participant completion information to ACCME for the purpose of granting ABIM MOC credit.

Participation information will be shared with ABIM through the ACCME's Program and Activity Reporting System (PARS). Blinded individual or aggregated participant data may be shared with the funder of the activity.

Nurses

Medical Learning Institute, Inc.

Provider approved by the California Board of Registered Nursing, Provider Number 15106, for 1.0 contact hour(s).

This CME/MOC/CE activity is jointly provided by Medical Learning Institute, Inc. and PVI, PeerView Institute for Medical Education.

This activity is supported by an independent educational grant from AstraZeneca.

PeerView
Live