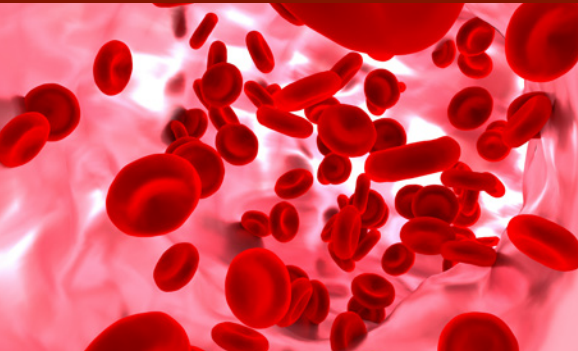


# Recognizing and Managing Hemophilia in the Emergency Department in an Era of Expanding Therapeutic Options

## *A Progress-in-Practice MasterClass and Practicum*

Co-Chairs: Sarah Luisa Melendez, MD, and Doris Quon, MD, PhD



**Date:** Monday, December 7, 2020

**Time:** 12:00 PM - 1:00 PM (Central Time)

**Faculty:** Dr. Colin G. Kaide

### DATE

Monday, December 7, 2020  
12:00 PM - 1:00 PM (Central Time)

### LOCATION

Illinois College of Emergency Physicians  
3000 Woodcreek Drive, Suite 200  
Downers Grove, IL 60516

### FACULTY

Colin G. Kaide, MD, FACEP, FAAEM  
Associate Professor of Emergency  
Medicine  
Specialist in Hyperbaric  
Medicine  
Department of Emergency  
Medicine  
Wexner Medical Center at The  
Ohio State University  
Columbus, Ohio

### TARGET AUDIENCE

This activity has been designed to meet the educational needs of emergency medicine specialists and other healthcare professionals involved in the management of hemophilia.

### EDUCATIONAL OBJECTIVES

Upon completion of this activity, participants will be able to:

- Apply current data on the efficacy, safety, and tolerability of approved therapeutic approaches when managing patients with hemophilia in the emergency department
- Cite available data on emerging treatment modalities for the management of hemophilia
- Employ current guidelines for the management of hemophilia in the emergency department
- Use shared decision-making when treating suspected bleeding episodes in patients who present to the emergency department

### PROVIDERSHIP, CREDIT & SUPPORT

This activity has been planned and implemented in accordance with the accreditation requirements and policies of the Accreditation Council for Continuing Medical Education (ACCME) through the joint providership of Medical Learning Institute, Inc. and PVI, PeerView Institute for Medical Education. The Medical Learning Institute, Inc. is accredited by the ACCME to provide continuing medical education for physicians.

The Medical Learning Institute, Inc. designates this live activity for a maximum of 1.0 *AMA PRA Category 1 Credit™*. Physicians should claim only the credit commensurate with the extent of their participation in the activity.

This CME activity is jointly provided by Medical Learning Institute, Inc. and PVI, PeerView Institute for Medical Education.

This activity is supported by an educational grant from Genentech.