

What's next in EDM?

Henry Pitzele, MD, FACEP

Jesse Brown VA, Chicago

A vibrant EDM festival scene at night. In the foreground, a woman with a large, colorful feathered headdress and a yellow top is looking to the left with her mouth open. The background is filled with a large crowd of people, many with their arms raised, under bright, colorful stage lights (purple, green, blue, and orange). A large screen in the distance shows a DJ performing. The overall atmosphere is energetic and festive.

What's next in EDM?

Henry Pitzele, MD, FACP

Jesse Brown VA, Chicago

What's next in EM? Threats/hopes/advocacy

Henry Pitzele, MD, FACEP

Jesse Brown VA, Chicago



Jesse Brown  Medical Center



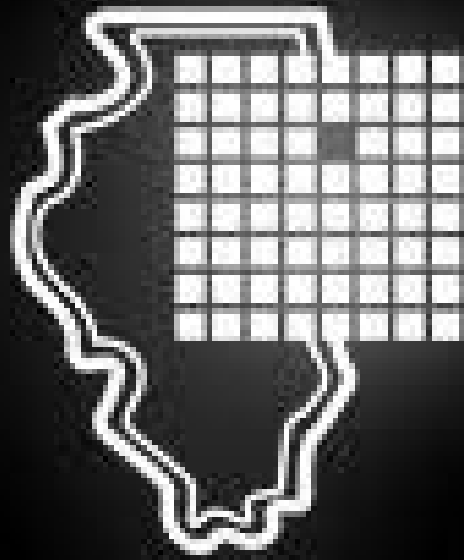


Mercy Hospital and Medical Center

LOT
C

LOT
C





**Illinois College
of Emergency Physicians**

Areas of risk



Areas of risk

- Workforce
- Scope creep
- Government/CMS funding
- Payors
- Workplace safety
- Autonomy/respect/workload



Corporate influence/
Consolidation

Workforce

- Projected oversupply
 - ACEP report/study
 - Supply side
 - Demand side
 - Geography

Figure 1. Historical Trends and Projected Growth of EM Residents Completing Training in 2030

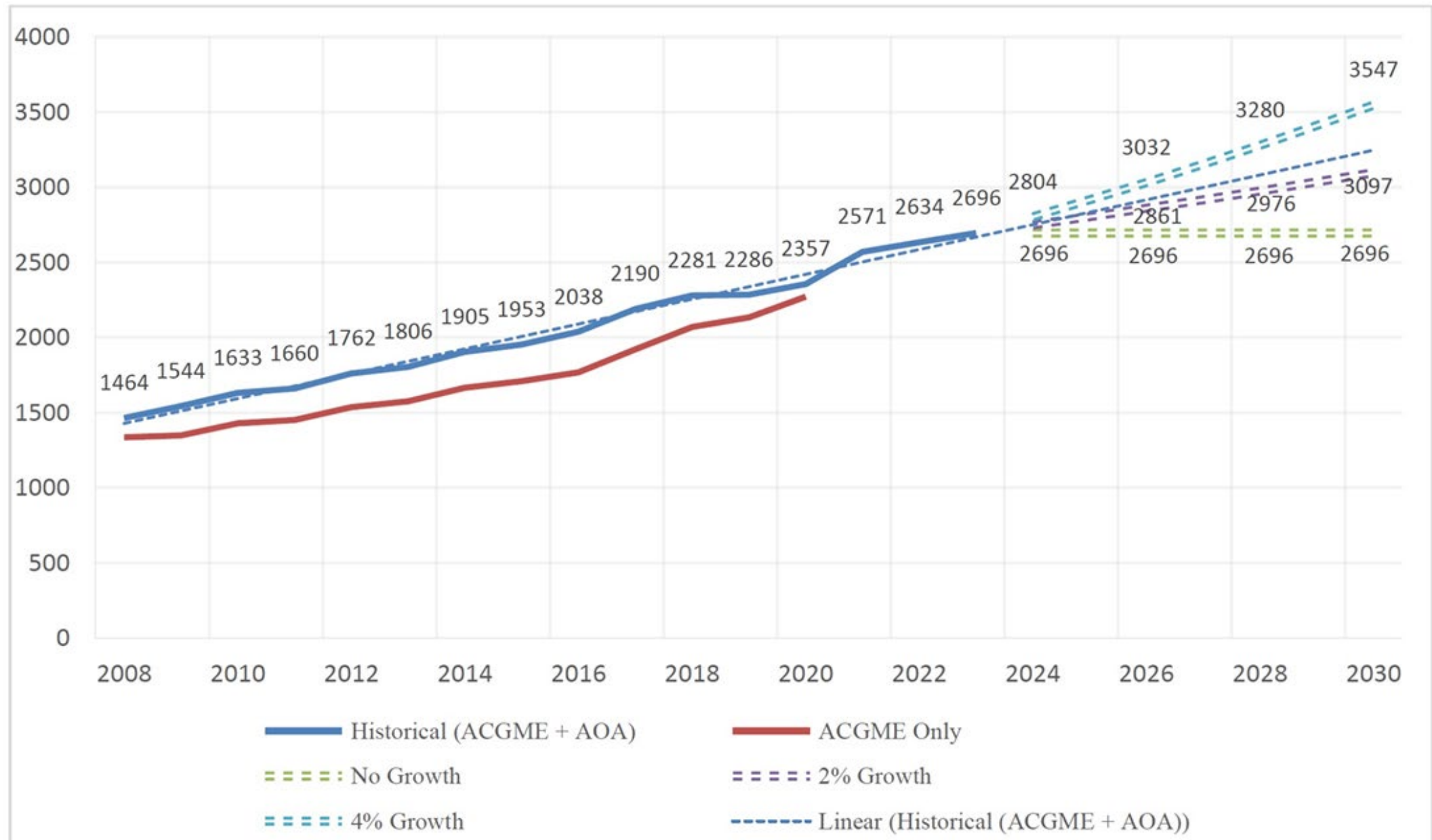
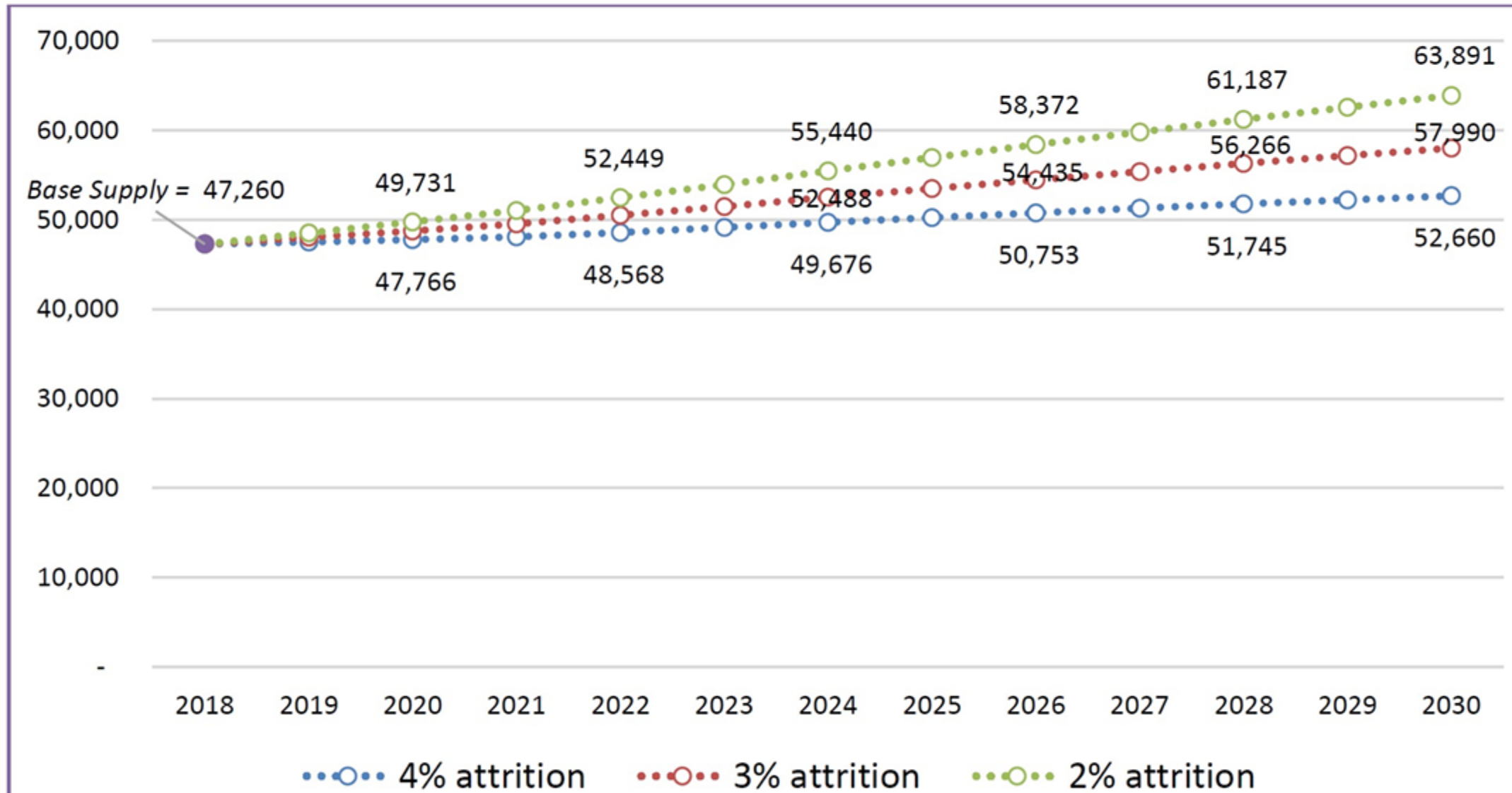
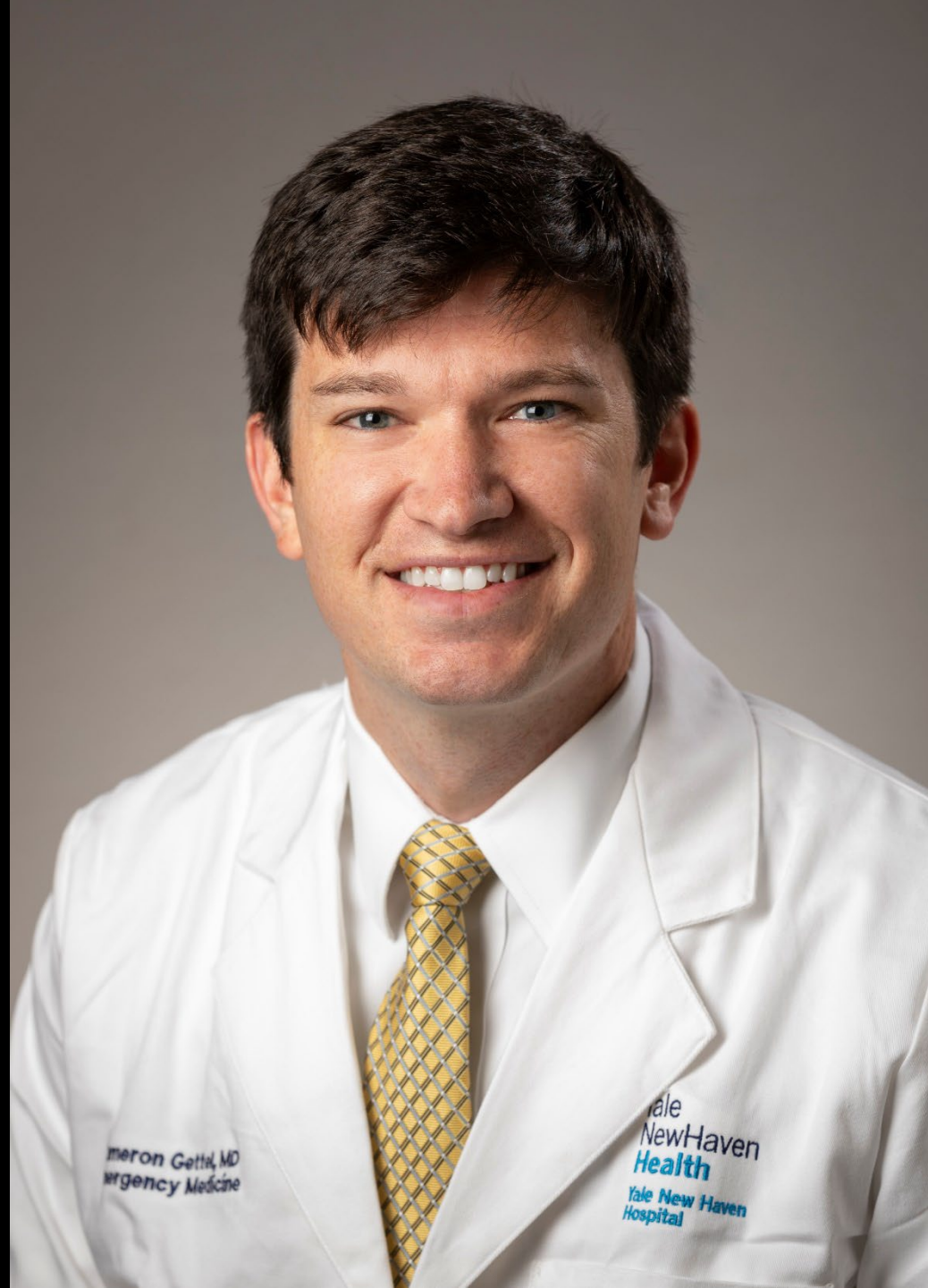


Figure 4. Projected Supply of EM Physicians Assuming No GME Growth and Varying Attrition

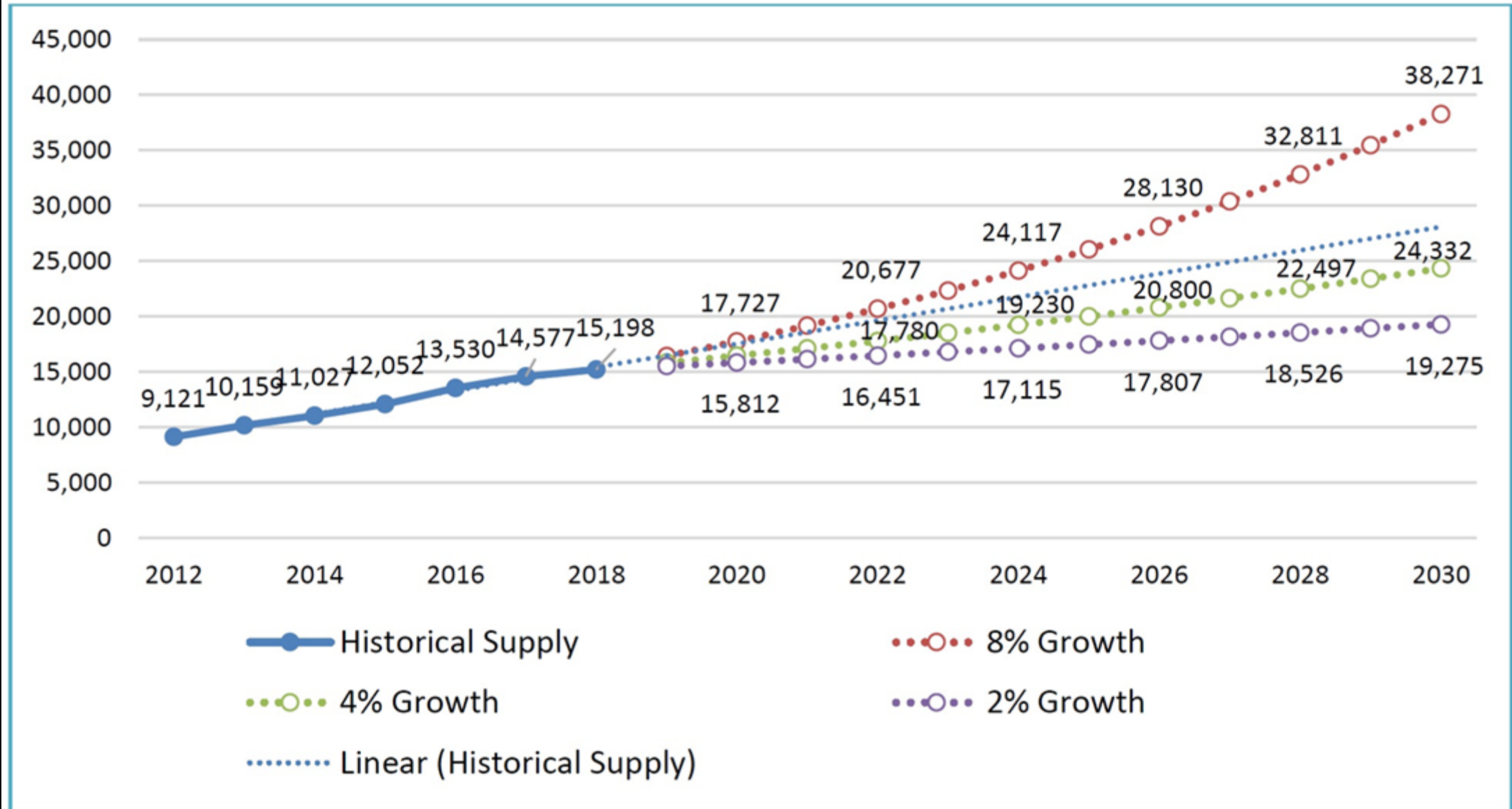


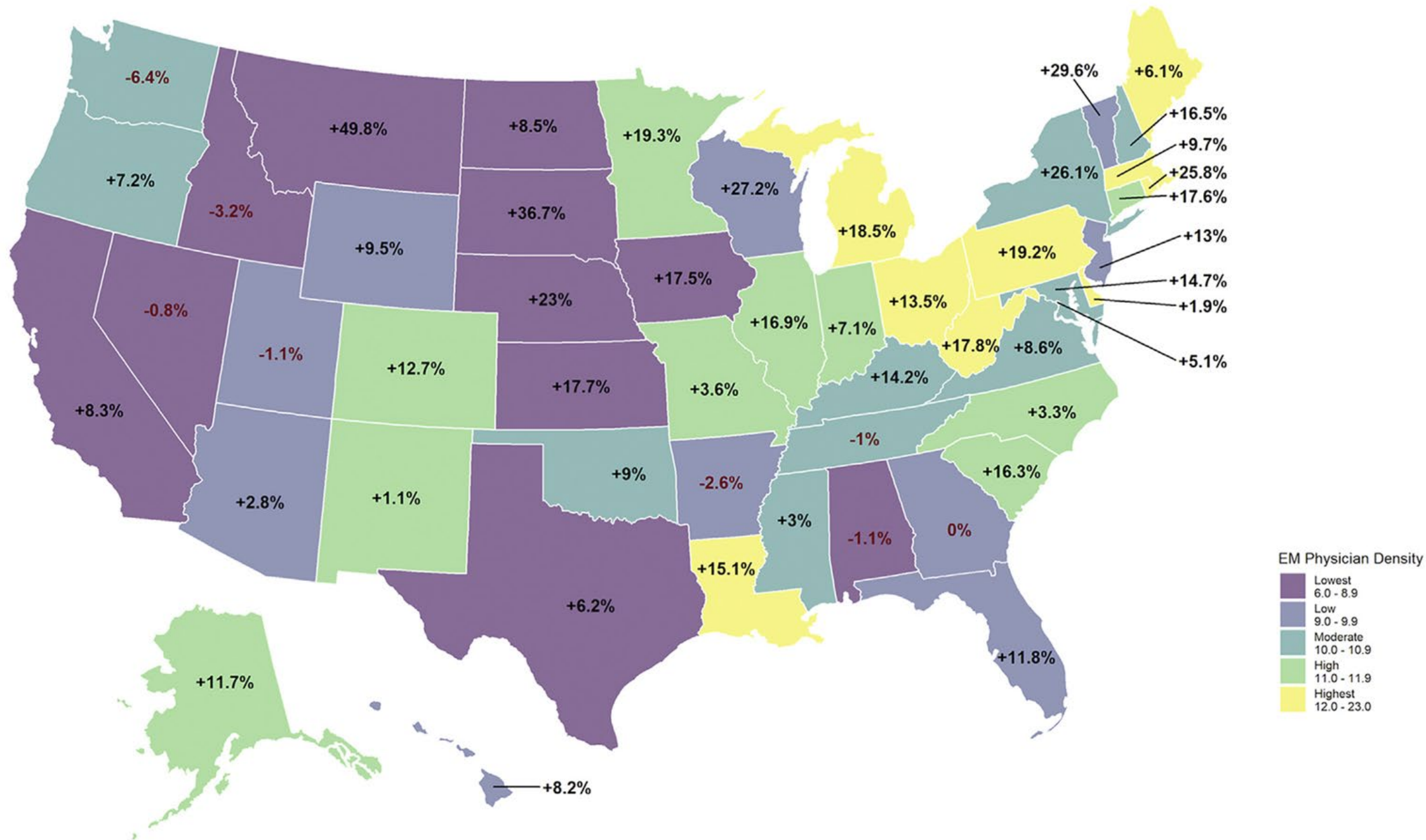


meron Getti, MD
Emergency Medicine

Yale
New Haven
Health
Yale New Haven
Hospital

Figure 6. Projected Supply of APPs Providing EM Services





Workforce

- Projected oversupply
 - ACEP report/study
 - Supply side
 - Demand side
 - Geography

- Decrease new residency formation
- Geographical rebalancing
- NPP

Scope

- FPA
- Increasing business model
- Results
 - Demand
 - Satisfaction
 - Quality...?

- Fight FPA leg
- Public-facing education
- Education/certification?

Government

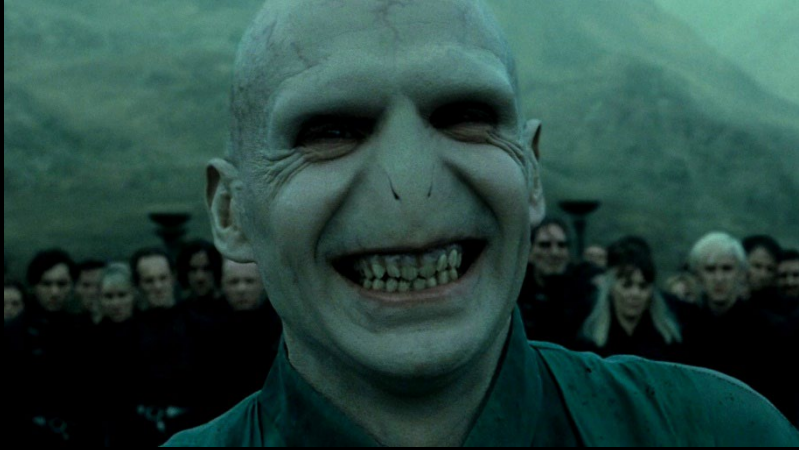
- Most of our \$
- Decreases every year

- Lobby continuously
- Sponsor legislation

Payors



Payors



Payors

- Constant battle for comp
- Now vertically integrating
- Monolithically powerful

- Approaching the table

Safety

- Difference since pandemic
- Public opinion
- Laxity of local laws (prosecution)
- Lack of federal laws

- State-level advocacy
- Federal advocacy
- Facility support

Autonomy/Consolidation

- Clinical
- Business
- Helplessness

- **NOT HELPLESS**
- Collective action



Advocacy

- Direct
- .alt pathways
- Collective

Direct

- Personal access to C-suite
- Vote with your job
- Personal access to lawmakers



Direct

- Personal access to C-suite
- Vote with your job
 - Luxury
 - Youth

Direct

- Personal access to C-suite
- Vote with your job
- Personal access to lawmakers
 - Make an appointment (off-season)
 - Visit them in Springfield/DC
 - Contribute!
 - (become one)

.alt



Dr Niki Thran for U.S. Senate 2022

138 followers • 28 following

.alt



.alt



.alt

**DR. AMISH
SHAH**
U.S. CONGRESS

[Home](#)

[About](#)

[Updates](#)

[Media](#)

[Awards](#)

[Get Involved](#)

[Sign My Petition](#)

[English](#) ▾

[Contribute](#)

**AFTER 5 YEARS OF SERVING IN THE
ARIZONA STATE HOUSE, I AM PROUD
TO ANNOUNCE I AM RUNNING FOR
U.S. CONGRESS.**

[Contribute](#)



A campaign graphic for Timothy Reeder. It features a portrait of Reeder on the right side, wearing glasses and a suit. The background is an American flag. Text on the left reads: "Thank you!" in a cursive font, followed by "for signing the TERM LIMITS ON CONGRESS PLEDGE" in a blue box. At the bottom, it says "U.S. TERM LIMITS" in a blue box, "Timothy Reeder" in large blue letters, "Candidate for North Carolina State House - District 9", and "termlimits.com" in a small box.

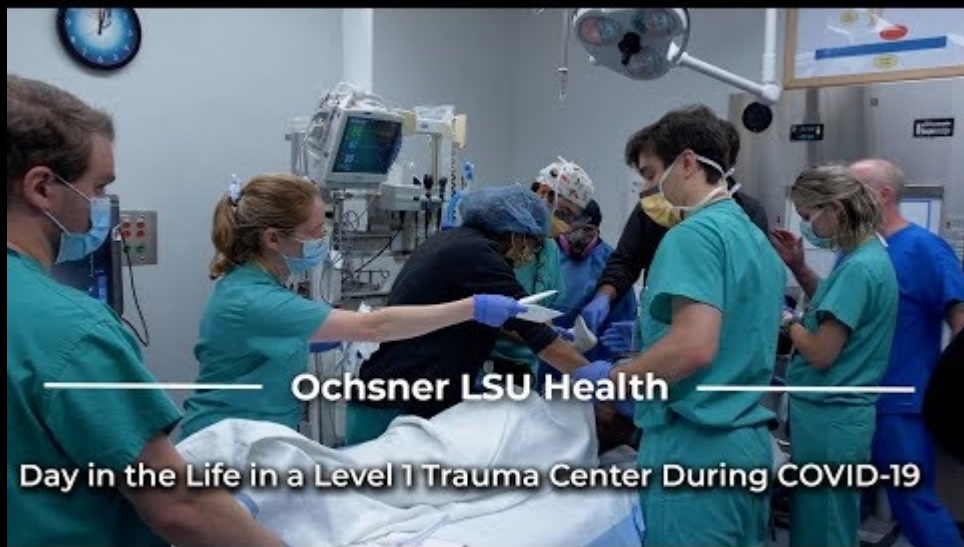
A screenshot of a campaign website for Lee Johnson, a State Representative. The top navigation bar includes the name "LEE JOHNSON STATE REPRESENTATIVE", social media icons for Instagram and Facebook, and a red "DONATE" button. Below the navigation are links for "Proven Leadership", "About Lee", "Connect", "Donate", and "Latest News". The main content area has a dark blue background with the text "FIGHTING FOR ARKANSANS" in large red and white letters. Below this, it lists "PRO-LIFE", "PRO-GUN", and "PRO-FREEDOM". A red "JOIN US" button is at the bottom. On the right side, there is a photograph of a man and a woman standing together.

?

.alt



.alt



.alt





ABOUT ▾


MEMBERSHIP ▾

PHYSICIAN RESOURCES ▾

PATIENT RESOURCES ▾

ADVOCACY ▾

NEWS



Putting Patients First

Promoting safe medical legislation for Louisiana

Join Us

Collective

- Unions?
- Organized medicine
 - General
 - EM

Unions

- TBD!

Organized Medicine

- Power collectively
- Jedi training
- Community
- Agency

Organized Medicine

- AMA
- State Med Soc
- EM
 - ACEP
 - EMRA
 - AAEM
 - SAEM

Organized Medicine

- AMA
- State Med Soc
- EM
 - ACEP
 - ICEP!
 - EMRA
 - AAEM
 - SAEM

Organized Medicine

- Hands off
- Hands on

Organized Medicine

- Hands off
 - Strong DC / state capital representation
 - Situational awareness
 - Really representing *your* interests

Organized Medicine

- Hands off
- Hands on
 - Getting involved personally
 - Directing/crafting legislation
 - Committee work
 - Advocacy teaching

Organized Medicine

- Hands off
- Hands on
 - Getting involved personally
 - Directing/crafting legislation
 - Committee work
 - Advocacy teaching



Organized Medicine

- Power collectively
- Jedi training
- Community
- Agency

